

June



at the **Bluecoat.**

June

Our community of **artists, creative businesses and retailers** are making their spaces their own at the Bluecoat. Expect the unexpected, from knitting groups to corsage workshops, choir rehearsals to artist's talks.

Shine at the Bluecoat, in association with Yorkshire Bank moves into its third month. Try your hand at jewellery design in June. And 11-16 year olds can compete to win a once-in-a-lifetime prize.

To celebrate the first summer back in the building, we make the most of our **garden**. Artist Jyll Bradley brings the Liverpool Botanical Collection to the Bluecoat after exhibiting the rarely seen specimens at this year's Chelsea Flower Show.

Variable Capital continues in the galleries throughout June. Highlights of our packed literature and performance programmes include a deliciously delirious performance from **Acoustic Ladyland** and a reading from leading poet **Les Murray**.

at the Bluecoat.



Continues daily until Sun June 29 10.00am – 6.00pm

In the galleries

Variable Capital

Free

Organised by artists David Campbell and Mark Durden (who work collaboratively as Common Culture).

Edward Burtynsky, Common Culture, Alexander Gerdel, Richard Hughes, Melanie Jackson, Louise Lawler, Hans Op de Beeck, Wang Qinsong, Julian Rosefeldt, Santiago Sierra, Larry Sultan, Brian Ulrich and Andy Warhol.

As a regenerated Liverpool enjoys its status as European Capital of Culture, *Variable Capital* presents international artists' timely, critical, and often humorous responses to today's consumer culture.

The artists in *Variable Capital* look beyond the seductive allure of the commodity. Santiago Sierra highlights the exploitation of unpaid workers and illegal immigrants; Hans Op de Beeck examines the mundane experiences of a supermarket cashier, while Edward Burtynsky and Brian Ulrich consider the waste produced from our greedy throw-away culture.

An accompanying Liverpool University Press publication is available at www.liverpool-unipress.co.uk and at the Bluecoat.

Every Friday during Variable Capital 12.00pm – 12.45pm

Variable Capital exhibition tours

Free

Knowledgeable guides present the themes of the show, offer their interpretation of the work and take questions and comments. Meet in the Hub.

For more information on associated talks and tours and to register for regular updates visit www.thebluecoat.org.uk

**Fri 30 May – Tue 3 June
and Sat 28 – Mon 30 June**

10.00am – 6.00pm

e-space lab

Liverpool/Gdansk/Shanghai
Video streaming, website, blogs
Free

Help reveal the changes taking place in Liverpool, her sister cities and in local and global urban environments.



Sat 31 May and Sun 1 June

throughout the day in the city
centre and at the Bluecoat.

Richard DeDomenici

Free Balloons

Live art

Free

To coincide with the opening of Europe's largest retail project, DeDomenici hands out balloons that suggest that art and shopping are just two different lifestyle choices.

www.dedomenici.co.uk



Sun 1 June 7.00pm

(first Sunday of every month)

The Blue Stocking Social Club

Multi-artform social club
£5

A variety night of innovations and experiments from the frontiers of film, music, dance, performance art and spoken word.

Tue 3 June 1.00pm

Philosophy in Pubs presents

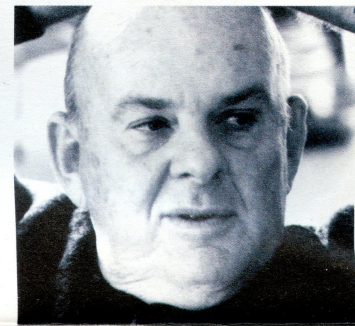
Art and Commodity Culture

Discussion

Free

Referencing the themes of the *Variable Capital* exhibition, come and discuss art's relationship to consumerism. No academic or formal background required.

www.philosophyinpubs.org.uk



Wed 4 June 7.30pm

Les Murray

In association with The Reader

Poetry Reading
and book signing

£7/£5

An unmissable opportunity to hear Australia's leading contemporary poet read from his work.

... one of the super league which includes Seamus Heaney, Derek Walcott and Joseph Brodsky – Blake Morrison, *Independent on Sunday*.

The Biplane Houses (Carcenet, 2006)

THE READER

Thu 5 June 8.00pm

(first Thursday of every month)

Liverpooljazz at the Bluecoat

£6/£3 (students)

Contemporary and mainstream jazz, well-known standards and works by North West composers.

www.liverpooljazz.org

Presented in association with

LIVERPOOLJAZZ



Fri 6 June 8.00pm
Vincent Dance Theatre

Act One
 Dance £10/£8

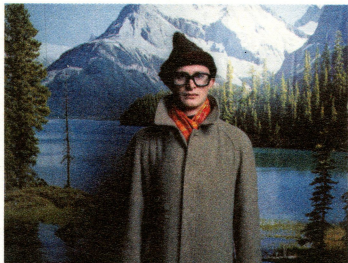
A double bill featuring solos by two of VDT's regular performers. Displaying the company's award-winning humour, passion and raw physicality, this is not to be missed.

www.VDTActOne.co.uk

Fri 6 June 12.00pm – 3.00pm
Charlotte Vincent Masterclass

£15/£10

A precious opportunity for experienced performers to work with Charlotte Vincent and members of VDT, exploring the company's creative process.

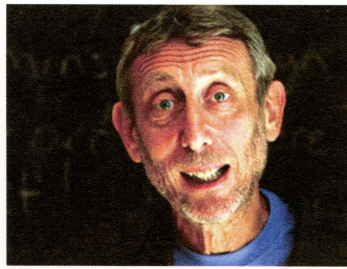


Sat 7 June 8.00pm
Simon Munnery

Comedy
 £6

Nobel prize for effort nominee serves up his latest brew of jokes, sketches, character, musings and poetry.

The most exciting and important comedian of the moment - The Times

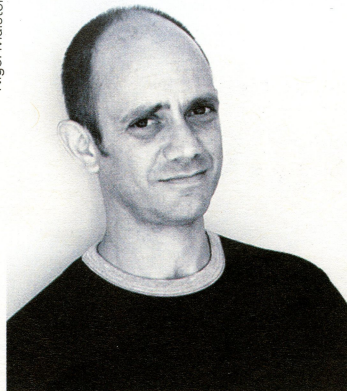


Tue 10 June 12.30pm – 1.30pm
Children's Laureate, Michael Rosen and the Windows Project

Book signing

Meet Children's Laureate, Michael Rosen as he signs books after a special reading for North Liverpool schoolchildren.

Mustard, Custard, Grumble Belly and Gravy (Bloomsbury, 2006).



Thu 12 June 7.30pm
Damon Galgut & Mike McCormack

Fiction Reading
 £7/£5

Author of *The Good Doctor*, Galgut reads from *The Impostor*, a novel of obsession and self-reinvention on the African Savannah.

He reads alongside McCormack, one of the most original and important voices in contemporary Irish fiction.

The Impostor (Atlantic Books, June 2008)

Notes From a Coma

(Jonathan Cape, October 2007)

Fri 13 June 9.30am – 12.00pm
Artists' Collectives and City Culture

Panel Discussion featuring:
 Lara Almacegui, Olaf Nicolai,
 Phil Redmond and Richard Williams

Free. Booking recommended.

An exploration of urban regeneration in Liverpool and cities worldwide, chaired by Bryan Biggs, Artistic Director at the Bluecoat.

For more information and to book a ticket contact Tate Liverpool on 0151 702 7400 or visit www.tate.org.uk/liverpool

Part of the conference *Magical Mysterious Regeneration Tour: Artists, Architecture and the Future of the City* (12-14 June)



Fri 13 June 11.30am – 1.30pm
Common Culture Bouncers

Live art
 Free

Variable Capital curators Common Culture present a live art intervention featuring 20 bouncers in the galleries.



Fri 13 June 7.30pm
Acoustic Ladyland

with support from

Yolk, a.P.A.t.T. and Diagonal

£12/£10

Respect for Hendrix and a distaste for jazz sterility brought Wareham's gattling gun sax and Rochford (of Mercury-nominated Polar Bear's exhilarating drums together. With Herbert on bass and Cawley on keys, Acoustic Ladyland are *pretty damned exciting* - Paul Morley.

Support comes from Yolk (Dunkirk) and a.P.A.t.T. (Liverpool's finest), both 6 pieces, both with reputations for devastating live appearances, and Diagonal (Brighton) who were hand-picked by Acoustic Ladyland.

www.myspace.com/acousticladylandmusic

www.myspace.com/yolk2006

www.myspace.com/apatt



Sat 14 June 8.00pm
Rosie Dennis

Love Song Dedication and No Entry
£8/£5

Two solo performances from the extraordinary Sydney-based performer.

Colliding movement and text, Dennis' style falls between performance poetry, dance and live art.

www.suture.com.au

Supported by the Australia Council for the Arts, The Plateaux Festival, University of New South Wales and University of Sydney.



Sun 15 June 2.00pm – 6.00pm
Rosie Dennis
Masterclass

Workshop
£15/£10

Dennis' hands-on masterclass explores techniques for creating new performance work in movement and spoken word. Open to performers from all backgrounds.

Tue 24 June 3.00pm
Philosophy in Pubs presents
Architecture and Nostalgia

Discussion
Free. Booking recommended.

Join PiPs for a topical discussion of emotional connections to the built environment, in Liverpool's oldest and newest building. Open to all.

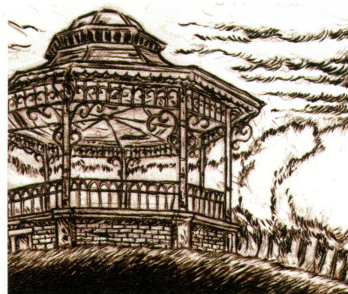


Thu 26 June 4.00pm
Valerie Bloom

Come, Me Pickney!
Poetry and Fiction Performance
£3 single
£10 family ticket (2 adults + 2 children or 1 adult + 3 children)
Suitable for children aged 7+

Gather round as Bloom delights with stories, lights and sound in this brand new performance. You could even find yourself singing along to a poem or two!

The Tribe
(Mcmillan Children's Books, 2007)
www.katetull.com



Sat 28 June 8.00pm
Sketchybeast and NILAmusic

present *Under the Bandstand*
Music and live drawing
£5

The big hit performance at the Bluecoat's opening weekend, Sketchybeast and NILAmusic return with live drawing, twisted fairytales, a mini orchestra of looping vocals and toy pianos, and a specially created set by artist Elizabeth Willow.

Presented in association with



shine

Throughout June
Shine
at the Bluecoat

in association with
Yorkshire Bank
Free activity

This month try your hand at jewellery design. The activity is open to all but if you are aged 11 – 16, you can enter your design for the chance to win a masterclass with a leading designer. Pick up activity materials at the Bluecoat or visit www.shineatthebluecoat.org.uk



Every Sunday
12.00pm – 4.00pm

Explore
in the Garden Room
Free activity

Fill an explore tin with the perfect mix of activities for your family seven days a week.

On Sundays, go and explore then come back and make some art of your own with help from our staff.

Cover image by Neil Keating, resident artist at the Bluecoat. Neil's illustration is inspired by the garden at the Bluecoat blooming in June.

In the garden

Thurs 19 June – Sun 22 June

Usual opening hours

Jyll Bradley

Mr Roscoe's Garden

Free

Established in 1803 with the original vision of William Roscoe, the Liverpool Botanical Collection has been housed in three gardens, each in turn built, lost and mourned. A rare chance to view the world famous living plant collection not seen in decades.

Presented at the 2008 RHS Chelsea Flower Show, *Mr Roscoe's Garden* is conceived by artist Jyll Bradley, commissioned by Liverpool Culture Company and developed and produced by London Artists Projects.
www.liverpool08.com



Sat 21 June and Sun 22 June

2.00pm – 4.00pm

Adela Jones

Grains of Paradise

Free. Booking recommended.

Devised by artist Adela Jones and local families, this event runs alongside *Mr Roscoe's Garden*. Find out more about the unique specimens, witness a live plant dissection, and meet botanists and gardeners.

Sun 29 June 6.00pm
Liverpool
Garden City

Hosted by 'Pool Project for National Garden Day Picnic and Discussion'
Free. Booking recommended.

'Pool project host an evening picnic in the garden, Liverpool's earliest vegetable plot. Whether an agriculturalist, allotment holder or keen gardener, come and celebrate the community of growers on Merseyside and discuss Liverpool's potential as a sustainable city.

www.poolproject.co.uk

Call 'Pool Project on 07928027180 for more information

June artists and creatives now settled at the Bluecoat:

Agent Marketing	Landbaby
Anthony Wong	Mango Percussion
A&R Photography	Markus Soukup
Becs Andrews	Nawal Gebreel
Ben Egerton	Neil Keating
Bernadette O'Toole	Nicki McCubbing
Bluecoat Display Centre	Nick Williams
bobbyandsophie	Nook and Willow
Bob Porter	Pedro Pedraja
Fittings Multimedia Arts	Purlesque
Jane Rees	Sacha Waldron
Julia Carter-Preston	Sense of Sound
Katriona Beales	Sharon Mutch

At any time visitors could find our artist and creative industry occupiers engaged in a stage of their own creative process. You might pick up one-of-a-kind handmade accessories from Landbaby, catch Bob Porter giving a hand-engraving demonstration, stumble across a Purlesque knitting group, or hear the Sense of Sound choir rehearsing.



eat & drink

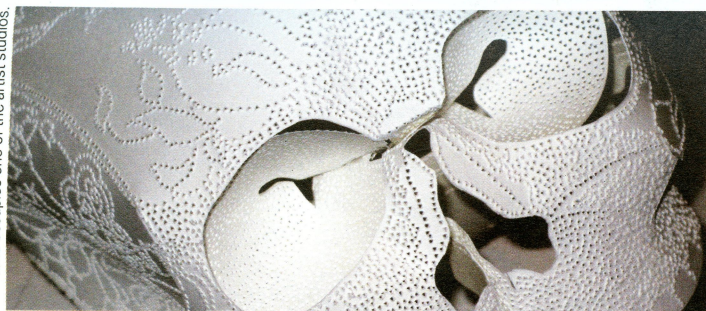
Upstairs at the Bluecoat.

The restaurant bar located on the first floor sells a wide selection of seasonal food and drinks. Sample our new lunch, dinner and bar menu of regional, homecooked food using locally sourced Summer ingredients. Relax at the bar with a glass of wine, a boutique beer or our homemade real lemonade.

Book a table at Upstairs at the Bluecoat at www.thebluecoat.org.uk or by calling 0151 702 7787

Espresso at the Bluecoat.

Located in the Hub, the espresso bar offers illy coffee, Jing leaf tea, soft drinks, homemade sandwiches, salads and cakes. Take these away, sit in the Hub, or use our new outdoor seating areas in the courtyard and garden to make the most of the June sunshine.



Opening hours

Open daily. Closed Christmas Day and New Year's Day only.

Galleries at the Bluecoat: 10.00am – 6.00pm

(closed during exhibition changeovers)

Tickets and Information: 8.00am – 10.00pm

(Sunday 10.00am – 10.00pm, Monday 8.00am – 6.00pm)

Espresso at the Bluecoat: 8.00am – 6.00pm

(Sunday 10.00am – 6.00pm)

Upstairs at the Bluecoat: 12.00pm – 10.30pm

(Monday 12.00pm – 6.00pm)

Access

The number of wheelchair spaces in the Performance Space and the Sandon and Garden rooms will depend on each event.

Please contact Tickets and Information or email dutymanager@thebluecoat.org.uk.

Alternative formats

Alternative formats of this brochure are available.

To request please contact Tickets and Information or email marketing@thebluecoat.org.uk

Tickets and Information

For further information and to book tickets visit

www.thebluecoat.org.uk

Tickets and Information 0151 702 5324

the Bluecoat. School Lane, Liverpool, L1 3BX

Concessions

Students and those claiming benefits can purchase tickets at the advertised concessionary rate on presentation of ID. Those purchasing tickets via the internet or telephone should show ID on collection.

Group tickets

Group discounts are available. For every 10 tickets you buy, you get the tenth free.

The Bluecoat is supported by:



Book tickets at www.thebluecoat.org.uk Tickets and Information 0151 702 5324

For more information sign up for regular updates about the Bluecoat at...

www.thebluecoat.org.uk

or call Tickets and Information 0151 702 5324

In June, why not:

Book tickets for events like...

Acoustic Ladyland, Les Murray or **Simon Munnery** at www.thebluecoat.org.uk

or call Tickets and Information 0151 702 5324

Book a table at **Upstairs at the Bluecoat**, the restaurant bar on the first floor of the building at www.thebluecoat.org.uk or by calling 0151 702 7787

Hire a space at the Bluecoat for your event. Contact entertaining@thebluecoat.org.uk

the Bluecoat, School Lane, Liverpool L1 3BX

How to find us

Situated in the centre of Liverpool, just behind Church Street, down Church Alley and in front of the new Liverpool One development. Enter the Bluecoat from School Lane.

