



**BLUECOAT**

LIVERPOOL'S CENTRE FOR THE CONTEMPORARY ARTS

AUTUMN 2005



# OUT OF THE BLUE COAT

Though closed to the public while building work takes place, Bluecoat is busy with a number of creative activities in the city, as detailed on the following pages.

Our outreach participation programme Connect carries on. There is contemporary live art from China presented at sites around Liverpool. And we are continuing to develop our partnerships with a range of artists. We will be announcing further news about our arts activities taking place during closure in the next brochure, including a series of artists' commissions in 2006.

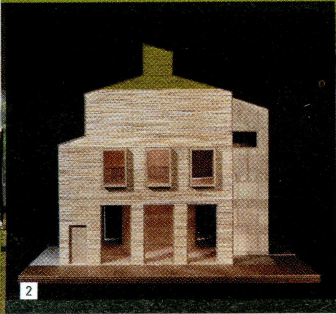
Our tenants, Bluecoat Display Centre, will remain open during closure with access from College Lane and we are working with them to minimise disruption so that visitors can still enjoy the varied and changing display by some of the best designer makers working today. The Centre's exhibition programme till the end of the year is outlined in this brochure.

Bryan Biggs, Bluecoat Director



This brochure is available in alternative formats on request. Contact **Bec Jones** with your requirements and we will do our best to respond as quickly as possible. Email: [beccy@bluecoatartscentre.com](mailto:beccy@bluecoatartscentre.com)  
Fax: 0151 707 0048  
Phone: 0151 709 5297 extension 14





## DEVELOPMENT NEWS

Bluecoat has embarked on an exciting new chapter in its long history as a centre for the arts. A major transformation of its spaces will see construction of a new arts wing, improvement of existing spaces and restoration of its historic fabric.

Funding from the Heritage Lottery Fund is now confirmed, bringing the total received from public funders to £9,026,000 and an appeal committee has been established to help generate the remaining funds. With planning and other permissions in place, construction work can proceed.

Chester Masonry, with a strong background in conservation construction, are now on site carrying out enabling works, including demolition of the rear south east wing that was patched up after this part of the building was badly damaged during the May Blitz in the Second World War.

This is where the new arts wing will be sited. Design of the garden has been undertaken in consultation with Bluecoat's garden panel to ensure its special qualities are retained. Access to this space will be from College Lane and through a new foyer, which will be created in the ground floor area occupied by the old gallery.

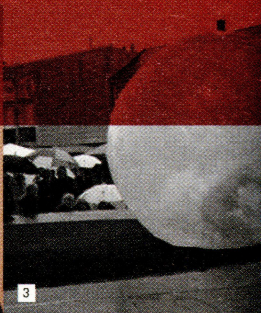
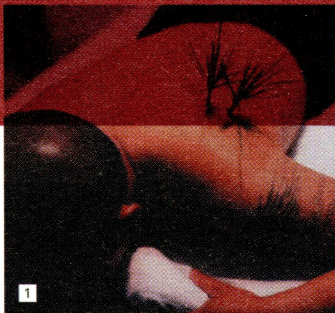
Hoardings at the front of Bluecoat have been erected, and until we reopen in 2007, will be used to communicate progress on the project and future plans. Bluecoat staff will remain in the building and can be contacted as normal, details in the information section of this brochure.

To find out more about the development, contact Project Director Julie Ehlen at Bluecoat.

You can find out more about our architects, BIQ Architecten from Rotterdam, their design approach and other projects they are involved in, by visiting their website [www.biq-architecten.nl](http://www.biq-architecten.nl). BIQ are working with two North West architectural practices, Austin-Smith: Lord and conservation specialists, Donald Insall Associates.

- 1 New foyer opening on to Bluecoat garden.
- 2 Model of the new wing, College Lane elevation. Images by BIQ Architecten.
- 3 Demolition of South East wing





## CHINA LIVE:

PRESENTATIONS OF CONTEMPORARY  
PERFORMANCES, ACTIONS AND FILMS  
SATURDAY 22 OCTOBER  
VARIOUS VENUES AND SITES ACROSS  
LIVERPOOL CITY CENTRE Free

China Live offers audiences a rare opportunity to experience a selection of visceral and challenging performance work being created by the current generation of Chinese artists.

The programme involves intimate audience interactions in He Chengyao's *Kiss*, live paintings with blood and ink of UK daily life by Yang Zhichao in *Chinese Red*, critiques of historical and contemporary trade relations in Wang Chuyu's *Material Files Of Sino- British Cooperation*, contemplative but extreme physical actions performed within a giant balloon by Zhu Ming, and conversations about modern China conducted under the shadow of a huge Chinese Communist Party flag in Shu Yang's *Dialogue in Chinese Style*. A film programme includes

documentation of remarkable site specific performance work by Zhu Ming, Yang Zhichao, Dai Guangyu, He Yunchang and Li Menguang. The programme will also feature a film by Leslie Hill & Helen Paris and a new work by Michael Mayhew.

For details of locations and times of performances and screenings, contact Cathy Butterworth at Bluecoat, 0151 709 5297 ext 19, or email [cathy@bluecoatartscentre.com](mailto:cathy@bluecoatartscentre.com)

The programme is accompanied by *China Live: Reflections* on contemporary performance art, a Chinese Arts Centre and Live Art UK bilingual publication including essays, artists' pages and statements, and reflections on China and its performance art scene by British artists.

*China Live* is a collaboration between Live Art UK, Chinese Arts Centre, the Live Art Development Agency and Shu Yang of the DaDao Live Art Festival, Beijing. It is financially assisted by Arts Council England. Publication financially assisted by British Council Artist Links.

Live Art UK is a national network supporting the development of live art. During October, as well as Bluecoat, *China Live* tours to other UK venues. For further details visit [www.liveartuk.org](http://www.liveartuk.org)





## e-spacelab: IN DIFFERENT SPACES NOVEMBER

As part of Architecture Week in June, Bluecoat organised a day-long event at Liverpool's Renew Rooms, when artists Philip Courtenay and Peter Hatton met the public, showed videos and talked about their ongoing e-spacelab project to develop links between Liverpool and its Chinese twin city of Shanghai.

e-space lab is interested in creating a collective work connecting artists in the two cities, enabling them to share their experiences of city life and the way the urban fabric is being transformed. Exploring new types of space, shared virtual spaces, the project's next stage in November will use mobile phone technology and streaming video to create a mosaic of captured, sounds, voices and texts captured in these great cities.

For further information visit the website [www.e-spacelab.net](http://www.e-spacelab.net), which is due to be launched in September, or contact Cathy Butterworth, 0151 709 5297 ext 19, email: [cathy@bluecoatartscentre.com](mailto:cathy@bluecoatartscentre.com)

## LIVERPOOL ARABIC ARTS FESTIVAL

In June Bluecoat worked with its partners to present the fourth Liverpool Arabic Arts Festival in venues across the city.

Highlights of this showcase of traditional and contemporary Arabic music, film, dance, talks and workshops – the only festival of its kind in the UK - included outstanding performances by Palestinian singer Amal Murkus in concert with the Royal Liverpool Philharmonic Orchestra, and Syrian musician Abdullah Chhadeh at the Al Ghazali Centre. The ever-popular Family Day was set this year in the splendid surroundings of Sefton Park Palm House.

To find out more about next year's festival contact Festival Manager Ngozi Ikoku at Bluecoat, 0151 709 5297 ext 21, or email [arabicarts@bluecoatartscentre.com](mailto:arabicarts@bluecoatartscentre.com)

1 Yang Zhichao from China Live

2 He Chengyao, from China Live

3 Zhu Ming, from China Live

4 e-spacelab: Hongkou lanes.

Photo Philip Courtenay

5 2005 Liverpool Arabic Arts Festival Family Day,

Sefton Park Palm House.

Photo copyright Robert Cook



1 Pool of sound  
2 & 3 Seen.2 participants.  
Photos by Annie MacLean

## CONNECT

Connect is Bluecoat's participation programme, bringing together artists and communities in creative collaboration. It continues while the building is closed for development. Here is news of some of our projects.

### HERMITAGE

Liverpool reads...

Bluecoat continues its relationship with **Crown Street Mental Health Resource Centre** and **Lower Lee School** for a project based on themes from this year's **Liverpool Reads...** book, **Millions** by Frank Cottrell Boyce. The book's lead character is obsessed by saints and the idea of "being excellent". In pursuit of this goal he builds himself a hermitage, spending time there alone in discomfort, experiencing visions of saints. Both groups will work with a visual artist to explore these concepts, with the aim of creating their own hermitages in the grounds of their facilities.

The project will be underway in October. It is hoped that a touring exhibition will be created for next May and June.



### POOL OF SOUND

The streets of Liverpool are full of sounds: phones ringing, builders drilling, music drifting, people laughing, alarms sounding, doors banging, seagulls crying, cars revving, bells clanging - sounds we let pass us by. Starting in September, a group of young people, together with acoustic ecologist **Phil Morton**, performance poet **Trevor Gerard** and sonic artist **Alex Decouigny**, will wander the city on an adventure in sound. They will hunt for lost sounds, describe favourite and irritating sounds, learn to record and edit, and create a surround-sound collage of city sounds.

The project is a collaboration between Bluecoat, Merseyside Youth Association, Frakture and Windows Project and is free for participants as the project is funded by the Liverpool Culture Company and Urban Cultural Programme working together for European Capital of Culture 2008.



Supported by  
**The National Lottery**<sup>®</sup>  
through the Millennium Commission







## A CREATIVE PARTNERSHIP WITH LOCAL SCHOOLS

Established in 2002 with the aim of encouraging teaching and learning for creativity in Merseyside schools, Creative Partnerships Merseyside (CPM) has worked with 25 schools, brokering links with creative practitioners and arts and cultural organisations.

Bluecoat has been funded by CPM to work with Tate Liverpool and Liverpool Biennial on action research exploring how modern and contemporary art can be used as a teaching and learning resource across the curriculum. Bluecoat is working with Halewood Performing Arts College and another Knowsley secondary school. The research will help to build relationships with staff and pupils, to be developed further when Bluecoat reopens.

Creative Partnerships Merseyside is jointly funded by the Department for Culture, Media and Sport and the Department for Education and Skills and is managed by Arts Council England North West.



## ROUTES AND ROOTS

The way people interact with their neighbourhoods is largely shaped by the way they physically navigate them (the routes they take) and how they came to be there in the first place (their roots). In Routes and Roots Kensington residents are working with local historian **Laurence Westgaph** to create an audio tour of Kensington, featuring stories, anecdotes and historical information about this fast-changing area. A photographer will also work with participants to create a trail of images complementing the audio tour.

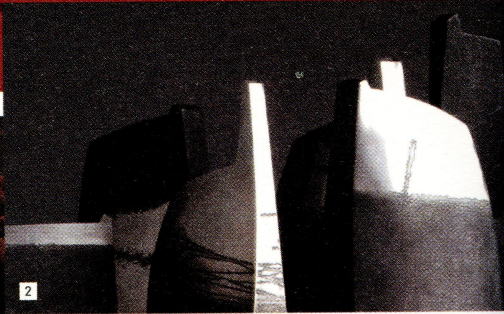
Bluecoat has been funded by Liverpool Culture Company to work with Kensington-based arts laboratory **Metal** to develop this project in partnership with Eastern Links Neighbourhood Management Team.

Routes & Roots  


**Metal**







## SEEN.2

Groups from Halewood Resource Centre, L8 and Fazakerley Croxteth Day Services, working with artist **Andy Weston**, are contributing to Biennial Bi-annual, a newspaper publication published every six months leading up to next year's Liverpool Biennial. The first of four editions will be launched this October with an accompanying exhibition at Liverpool John Moores University's 68 Hope Street Gallery, 5 – 10 October (open daily from 9.30am to 4.30pm, except Sunday). The groups are creating their own visual depictions of Liverpool, with the aim of introducing the city to international artists participating in the Biennial.



**liverpool biennial**

While we are closed, organisations associated with Bluecoat, including some of our partners and tenants, are continuing to promote their work. Here are some exhibitions and events we hope you will be interested in supporting:

### BLUECOAT DISPLAY CENTRE

is open with access from College Lane at the rear of Bluecoat.

Phone 0151 709 4014

[www.bluecoatdisplaycentre.com](http://www.bluecoatdisplaycentre.com)

#### Opening Times:

Monday – Saturday 10.00am – 5.30pm

Closed Public Holidays. Admission Free

### EMMA RODGERS SOLO

1 – 29 OCTOBER

Major exhibition showcasing Emma Rodgers' current work, including ceramics and bronze. Illustrated lecture and demonstration **Thursday 20 October 2.30 – 3.30pm**. Tickets £3.95 (£2.95 conc).

### SHOCK OF THE NEW

26 NOVEMBER – 7 JANUARY

Contemporary jewellery on a theme of regeneration and use of new materials, featuring North West based makers, **Rebecca Gouldson, Kath Grimes, Linda Jeanne Jones, Jenny Walker, Anthony Wong** and from across the UK, **Yoko Izawa, Tom Mehew and Miranda Sharpe**.





### IN THE WINDOW SERIES

September **Gillies – Jones**, contemporary artist/glass blower partnership

October **Laurel Keeley**, hand thrown decorated ceramics

November **Jeff Soan**, animated wooden birds, fish and animals

December **Melanie Tomlinson**, tin automata

### FRAKTURE

Takes you to undiscovered sonic places. Their autumn programme features:

#### BADLANDS

FRIDAY 30 SEPTEMBER 8.00PM £3  
ST BRIDES CHURCH, CATHERINE ST

#### FRAKTURE FESTIVAL OF IMPROVISED MUSIC:

**ALESSANDRO BOSSETTI SOWARI**  
WEDNESDAY 23 NOVEMBER 8.00PM  
£5/£3  
HOPE UNIVERSITY AT EVERTON

**STEFAN KEUNE / JOHN RUSSEL /  
ROGER TURNER / PAT THOMAS /  
ALEX WARD**  
FRIDAY 25 NOVEMBER  
VENUE TBC

### TAKE ME TO THE RIVER: SLOW SOUNDWALK 3

SATURDAY 26 NOVEMBER 11.00AM – 12.30PM Free  
MEET OTTERSPOOL GATES,  
AIGBURTH ROAD/JERICOH LANE

More events to be confirmed: Full programme information [www.fracture.org](http://www.fracture.org)

Fracture hold monthly free improvised music workshops at Hope University at Everton for anyone interested in taking risks, developing their musical language and networking. Sessions usually 7.30pm first Monday of month. 0151 280 9628 for information.

This Autumn, Fracture Big Band is performing and recording in unusual site specific locations including Williamson Tunnels and Central Library's Picton Room, as part of 80 Days Around the City. Visit Fracture website for details.

1 Seen.2 participants. Photo by Annie MacLeon  
2 Rebecca Gouldson, Long Skyline  
3 John Russel



**BLUECOAT**

[www.bluecoatartscentre.com](http://www.bluecoatartscentre.com) 0151 709 5297