

General Enquiries & Information

bluecoat

BLUECOAT OFFICE 0151 709 5297
School Lane, Liverpool L1 3BX
Monday - Friday 9.30am - 5.00pm
E mail: bluecoat@dircon.co.uk
Website: www.bluecoatartscentre.com
To be launched later this year.

BOX OFFICE

Reserving and booking tickets
Bluecoat Box Office 0151 709 5297
Monday - Friday 11.00am - 4.00pm
(Door F Front Courtyard)
Editions Ltd 0151 709 2001
Saturday 9.30am - 5.30pm
(Door C Front Courtyard)
Virgin Megastore Box Office,
Clayton Square 0151 256 5555
Monday - Sunday 9.30am - 5.30pm

CONCESSIONARY TICKETS

Concessions are indicated in brackets and are available to students, jobseekers, children aged 16 and under, people with disabilities and senior citizens. Proof of eligibility must be provided - one discount per ticket.

GROUP BOOKINGS

Buy ten tickets and get your eleventh FREE (subject to availability).

• Please Note To ensure the best use of facilities, please inform the box office of your needs when booking. If you are unable to make the stairwell to the 1st floor box office and Bluecoat Office when visiting, please notify the Gallery or Bookshop and a member of staff will come and deal with your enquiry.

VOLUNTEERS

The Bluecoat is grateful to volunteers helping with performances and in the Gallery - a service vital to our work. If you are interested and can spare the time, we would love to hear from you. Please telephone or write to Volunteers at the Bluecoat Office.

GALLERY 0151 709 5689

Open Tuesday - Saturday 10.30am - 5.00pm (during exhibitions)
FREE Admission

GALLERY NOTICE BOARD

Make use of the gallery notice board by displaying information about exhibition opportunities, commissions and studio space for hire.

GROUP VISITS

The Gallery welcomes group visits. If you would like to discuss how the exhibitions might be relevant to your group please contact the Gallery Office.

ROOM HIRE

Do you need rooms for rehearsals, piano practice, workshops, meetings, conferences, parties, weddings or receptions? The Bluecoat has a range of rooms for daytime and evening hire at reasonable rates. For reservations and enquiries please contact Anne McFadden at the Bluecoat Office.

ACCESS

The Bluecoat welcomes disabled people. We provide toilet facilities in the Gallery, Braille signage around the building, Braille and large printed versions of the seasonal brochure and wheelchair access to the ground floor, with ramps at the front and back of the building. We regret however that there is no wheelchair access to the Concert Hall, Print Studio, Box Office, Bluecoat Office and upper floors at present. Disabled Parking is available behind the Bluecoat on College Lane.



PUBLIC TRANSPORT

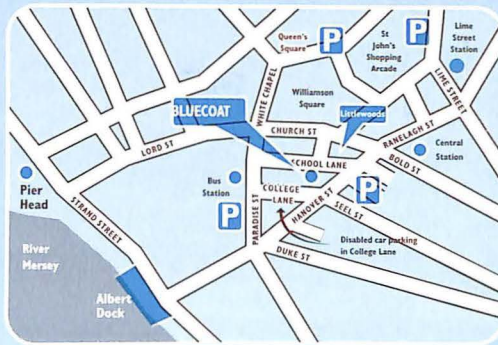
Train: (closest stations) Central & Lime St.
For full timetables contact the National Rail Enquiries on 0345 48 49 50.

Bus: (closest stops) Lewis's Department Store, Hanover St, Paradise St Bus Station.
For full timetables contact Merseytravel on 0151 236 7676.

Secure Parking: Hanover St Car Park, St John's Shopper Car Park, Queens Square Car Park or the NCP Car Park on Paradise St (see map for details).

HOW TO FIND US

We are situated in the city centre off Church Street, behind Littlewoods.



Jazz

Folk

Dance

Visual Art

Performance

Workshops

Literature

Music

Shops

Café



Liverpool's centre for the arts
October - December 2000

A WORD FROM BRYAN BIGGS, DIRECTOR **INTERESTING BLUECOAT FACT NO.4**

THE BLUECOAT has had a cultural exchange programme with the German city of Cologne for the past thirteen years - part of Liverpool's earliest sister city relationship, established in 1952. Following successful exhibition exchanges, we are pleased to again present contemporary art from Cologne this season in our gallery, in a programme entitled *Eight Days A Week*, a city-wide project which the Bluecoat has devised in collaboration with venues and artists in both cities. This is an important link, providing opportunities for local audiences to see art from one of Europe's most vibrant cultural centres, and for Merseyside artists to work there. It also contributes to strengthening Liverpool's international connections as it prepares its bid to become European Capital of Culture. This autumn the Bluecoat also participates in the *Liverpool Theatre*

Festival, when we showcase innovative performance work encompassing dance, theatre, poetry and music. There is music too from Cologne as part of the Fraktura improvisation festival, and visits from two renowned female singers, June Tabor and Jacqui McShee, who heads the latest line up of 60s jazz/folk legends Pentangle. Our outreach programme *Bluecoatconnect*, bringing together local communities and artists in creative partnership, culminates in a celebrity exhibition and series of events in January, and we are currently fundraising to develop this area of work further. And on the building development, we welcome Charlotte Myhrum as Development Manager. She will be working on the exciting capital plans to refurbish and expand the Bluecoat's facilities over the next few years.

MAILING LIST

The Bluecoat is a charitable organisation, which depends upon you allowing us to send information about forthcoming events, special offers and our quarterly brochure. If you would like to join the mailing list please fill in the form below and post it to: Marketing Department, Bluecoat Arts Centre, School Lane, Liverpool L1 3BX.

Title _____ First Name _____ Surname _____
 Address _____

 _____ Postcode _____
 Telephone _____ E-mail _____

Please tick from the list below your areas of interest:

All	<input type="checkbox"/>	Poetry / Literature	<input type="checkbox"/>	Jazz	<input type="checkbox"/>	Asian / Indian Arts	<input type="checkbox"/>
Video / Film	<input type="checkbox"/>	Folk / Roots / World	<input type="checkbox"/>	Visual Arts	<input type="checkbox"/>	Contemporary Dance	<input type="checkbox"/>
Children's Activities	<input type="checkbox"/>	Performance	<input type="checkbox"/>	Live Art	<input type="checkbox"/>	Architecture / Tours / Heritage	<input type="checkbox"/>

Other (please specify) _____

This information will be used from time to time to send you details about future events at Bluecoat which we believe will be of interest to you. Your details will not be sold or communicated to any commercial organisations. If you do NOT want to receive information from other arts organisations please tick here.

Music

Folk

Jacqui McShee's Pentangle

Wednesday 18 October 8.00pm Tickets: £9.00 (£7.00 conc)

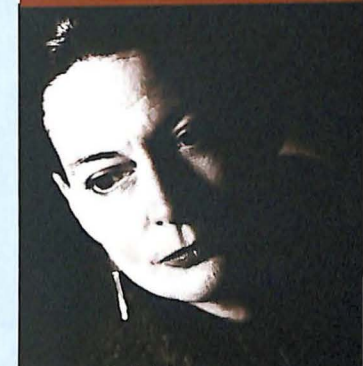
Pentangle's first album released over 30 years ago created a new genre, blending folk, jazz and other musical elements. The group's vocalist Jacqui McShee – the first lady of jazz/folk – returns now with an exciting line up comprising folk rock luminary Gerry Conway (drums), Spencer Cozens (keyboards), Alan Thompson (bass) and Jerry Underwood (saxophone), who between them have worked with John Martyn, Richard Thompson, Andy Sheppard and many others. Combining traditional and contemporary material, folk songs set against exotic worldscapes and bold jazz arrangements, the band's live performances include imaginative new arrangements of old Pentangle favourites, all featuring McShee's haunting vocals.



June Tabor

Saturday 18 November 8.00pm Tickets: £9.00 (£7.00 conc)

Described as one of "England's great interpreters of popular song" (The Guardian), June Tabor has an extraordinary voice and an instinctive feel for the folk song tradition. Inspired by great Scottish folk singers like Jeannie Robertson, her performances might also take in the songs of Gershwin, Shane McGowan and the Velvet Underground. Equally at home with the Oyster Band and the Creative Jazz Orchestra – both of whom she has worked with – she is one of our most original and versatile voices, championed by the likes of Elvis Costello, who has written especially for her. A tantalising, broody, chilling presence, Tabor's performances are always mesmerising. Huw Warren (piano) and Mark Emerson (violin) will accompany June on her return visit to the Bluecoat.



Music

The Third Frakture Festival of Improvised Music

Improved Music is a label that has stuck since the late 1960s. Its soundings are distinct and diverse, and the Frakture Festival reflects this, from Joachim Zoepf's explorations of solo saxophone playing and the Listening Room's environmental recordings, to Arc's improvisation with a jazz friendly face and the engaging presence of Maggie Nicholls.

For further information write to P.O. Box 36, Wavertree, Liverpool L15 9JD or visit the website <http://www.frakture@freeserve.co.uk>

Joachim Zoepf

Thursday 12 October 8.00pm Tickets: £3.00 (£2.00 conc)

Active on Cologne's lively improvising scene, Joachim Zoepf has been playing saxophone and bass clarinet for over 20 years. An experienced improviser, he has played in numerous formations and worked in collaboration with dancers and painters. He is supported here by local musicians. Come along and let yourself be carried away by an experience that will transcend your expectations.

Maggie Nicholls and Frakture Big Band

Saturday 14 October 8.00pm Tickets: £5.00 (£3.00 conc)

A vocalist and a presence that exudes a palpable charm, Maggie Nicholls is a performer whose vitality shines whether singing standards or improvising. A respected performer of improvised music with a radical and political edge since joining John Stevens' Spontaneous Music Ensemble in the late sixties, she has collaborated with the best including recent visitors to the Bluecoat Keith and Julie Tippett and Lol Coxhill.

Arc

Thursday 19 October 8.00pm Tickets: £5.00 (£3.00 conc)

Featuring Orphy Robinson (vibes), John Bisset (guitar), Simon H. Fell (double bass), Mark Sanders (drums) and Pat Thomas (keyboards and electronics), Arc's performances are vibrant and full of contrast, a pull towards melody and atmospheric texture vying with a scratchy-scratchy subversion. This is improvisation with a friendly face.

Shurts and Lifts - The No. 2 Re-mixes

Friday 20 October 8.00pm FREE Admission

The Listening Room re-mix two of their audio-visual shows for a Frakture Festival special. Two contrasting soundscapes – the big and public noises of the railway and the 'tiny private sound-worlds of the lift' – provide contrasting material for a great listen and look. Be there.



Image credit: Joachim Zoepf

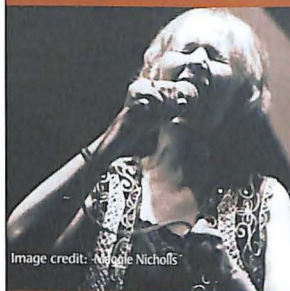


Image credit: Maggie Nicholls

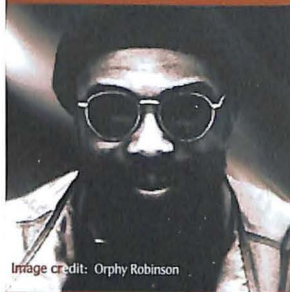


Image credit: Orphy Robinson



KOLN

Music

Hession/Mole/Kirk

Saturday 21 October 8.00pm Tickets: £5.00 (£3.00 conc)

A treat for the final event, this trio of the unexpected features Paul Hession (drums), Mole (saxophone and miscellaneous), James Kirk (double bass) in a night of melodic and abrasive listening bursting with energy. A trio with no constraints that brings grace and power to the Frakture stage.

Stefan Keune and John Russell

Thursday 16 November 8.00pm Tickets: £5.00 (£3.00 conc)

Since their early involvement with free improvisation Stefan Keune and John Russell have refined their musical collaboration to bring together the intellectual and the intuitive with the practical in the creation of a music that is unique to a specific time and place.

The Listening Room

The Electro Acoustic End

Friday 17 November 7.30pm FREE Admission

Roger Parry listens to some of the products of the recent crop of electro-acoustic groups operating at the more open end of musical performance.

The Soundwalks Re-union

Friday 15 December 6.30pm

Sound-walk 6.30 - 7.30pm Performance 7.45 - 9.00pm

FREE Admission

The Listening Room travels its classic sound-walk route for the third time. After tonight's sound-walk there will be a special performance utilising digital recordings of the three sound-walks plus video evidence and live treatments.

Sense of Sound

Wednesday 6 - Thursday 7 December 8.00pm Tickets: £7.00 (£5.00 conc)

Sense of Sound's celebration of all things vocal returns to the Bluecoat.

Saphena Aziz, Perri Alleyne – Hughes, Jennifer John and Juliet Russell together form one of the most innovative a cappella groups in the country. Renowned for their soulful melodies and intricate harmonies this group continues to create some of the most original sounds currently emerging from the Liverpool music scene. The quartet, along with fellow course tutor Tracey Carmen, have prepared the latest workshop group for this performance. Singing a wide range of material, from Sting to M People, the group will show the amazing results of this 12 - week course. Book in advance.



Visual Arts

Eight Days A Week: Cologne in Liverpool 2000 Köln

The Bluecoat is the co-ordinating venue for this programme of art from Liverpool's German sister city of Cologne, featuring 14 exhibitions and other events at venues on Merseyside this autumn, involving over 50 artists from the two cities. A free information guide is available from the Bluecoat Office.



ALEXANDRA SELL
BORIS BECKER
ISKENDER YEDILER
TOBIAS GERBER
THOMAS RENTMEISTER

6 October - 11 November

Cologne is one of Europe's most vibrant and dynamic cities for contemporary art. Rather than attempt to give an overview of its enormously varied art scene, this exhibition brings together five artists working there, and features sculpture, drawing, photography and video.

Boris Becker's *Fakes* series of photographs demonstrates the extraordinary inventiveness of the international smuggling trade, whilst **Iskender Yediler's** inflatable sculpture takes a wry look at the 'religion' of consumerism. **Thomas Rentmeister's** amorphous sculptures have a hyperreal perfection that suggest a parallel universe of objects, and



Alexandra Sell *The Avon Project*

Tobias Gerber's animated drawings are rich with metamorphosis and atmosphere.

Alexandra Sell's *The Avon Project* stems from her commission by Avon Cosmetics to portray three British Avon Ladies. The project became a personal but displaced relationship with the women, lasting two years. Presented here as a video projection, the resulting artwork documents a curious relationship between the artist and her subject, in which the latter seems to have taken control, gathering a momentum and life of its own.

The Avon Project is commissioned by the Foundation for Art & Creative Technology.



Visual Arts

Look Out!

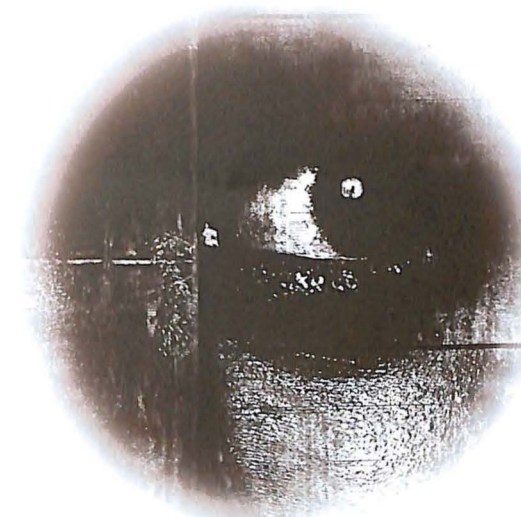
21 November - 11 January

(The gallery will be closed from 24 December until 1 January inclusive)

This exhibition, curated by Peter Kennard, brings together artists' responses to social and political issues at the beginning of the third millennium. It is not however a survey of political contemporary art. Occasionally looking back to look forwards, by bringing together a combination of new and older works, it refutes the notion of a built-in 'sell by' date for socially or politically engaged art.

Despite a tradition stretching back centuries that includes artists such as William Blake, Hogarth and Goya, art and politics are still often seen as terms that sit uncomfortably together. This exhibition does not claim to resolve debates about this relationship, but stems from a belief that art can be, and still is, a powerful communicator about social issues and political realities. Look Out! positions the artist at an observation post, pointing out potential dangers, unveiling hidden threats. The exhibiting artists span three generations, linking well known with less familiar names, these include **Leon Golub**, **Nancy Spero**, **Mona Hatoum**, **Matt Collishaw** and others.

A colour catalogue produced with D-Pict magazine, accompanies the exhibition. Details of discussion events around the exhibition to be announced.



WINDOW BOX

Stop and look at the smallest exhibition space in Liverpool, located between our Bookshop and Café Bar on the ground floor.

October **Claire Hope**
November **Tony Knox**
December **Marie Anne McQuay**

Performance

Liverpool Theatre Festival

Celebrating the diversity of performance activity in the city, this festival provides an opportunity for local venues to collectively showcase the work they do. The Bluecoat's contribution comprises four events that, though presented in a theatre context, offer a broader range of exciting live performance, taking in dance, theatre, music and poetry. A Festival brochure is available from the Bluecoat Office.

CELEBRATING BLACK HISTORY MONTH

Jean 'Binta' Breeze with Jerome Massett

Thursday 26 October 8.00pm Tickets: £5.00 (£3.00 conc)

An event for Merseyside Black History month expanding theatrical possibilities for black poetry, featuring internationally renowned Jamaican poet and performer **Jean 'Binta' Breeze** whose work reveals a generous and uncompromising vision and sublimely tuned lyrical sensibility, supported by Liverpool's **Jerome Massett**, performing *Toxteth Chronicles IV*. Jerome is a radical poet, whose performance style is precise, rhythmic, fierce and very funny.



HEART 'N' SOUL MUSIC THEATRE

Experience

Wednesday 8 November 1.30pm Tickets: Payment by Donation
Performed at the Blackie, Great George Street, Liverpool L1 5EW

Featuring a wide range of musical styles from the Caribbean and UK, from garage to reggae and soul, this acclaimed company of actors and musicians with learning disabilities will take you on a fantastic musical journey. The performance is a lively and upbeat reflection of the world as they see it, with songs being written and composed by the performers. Singers include founder members **Pino Frumiento** and **Winston Green**, alongside members **Lizzie Emeh** and **Gillian Williams**.

This is a collaboration between the Bluecoat and the Blackie. The Blackie is fully accessible. Tickets available from Bluecoat Box Office. Early booking recommended. All welcome! www.heartnsoul.co.uk



Playing Away



Literature

IN ASSOCIATION WITH THE READER MAGAZINE
Bluecoat Reading Group

Starting Wednesday 4 October 6.30pm

Workshop Fees: £12.00 (£9.00 conc) for 3 workshops

'It's like having extra pages added to the book.' Read for pleasure then talk. Join the Bluecoat Reading Group in a new series of monthly workshops where, with the informal guidance of *The Reader Magazine*, you can come and talk about books with other like-minded people. Refreshments will be provided to go with the first book, **Philip Roth's** moving and magnificent novel, *American Pastoral*. You suggest the next one...

Performance

PROTEIN DANCE

On The Couch and Portrait with Group and Duck

Friday 10 November 8.00pm Tickets: £6.00 (£4.50 conc)

Award winning Protein Dance presents an evening of sharp and witty dance theatre. Taking us on a maverick journey into the world of self-analysis (*On The Couch*) and liberating excitement (*Portrait with Group and Duck*) this is their debut double bill Bluecoat appearance. Funny, fresh and shameless. Not to be missed!



Image credit: Malke Zimmermann On the Couch

GREEN CANDLE DANCE COMPANY

Alanna and the Tree

Saturday 11 November 3.00pm Tickets: £5.00 (£3.00 conc)

Alanna and the Tree is colourful and funny, engaging young people in the issue of saving the environment, through a beguiling mix of dance, music and theatre.



Image credit: Malke Zimmermann Portrait with Group and Duck



Image credit: Hugo Glendinning Alanna and the Tree

Literature

YEAR OF THE ARTIST EVENT
Words and Music Project

Saturday 28 October
10.00am – 6.00pm

An opportunity for improvising musicians and others keen to experiment, to become involved in the creation of 'Words and Music', to be premiered at the Bluecoat, Easter 2001. Musician and composer **Phil Hargreaves** is working with writer/performer **Dinesh Allirajah** to develop exploratory workshops based on new works of writing. If you would like to take part, contact Phil on 0151 733 2288 or by e-mail: phil@whi-music.co.uk

Year of the Artist is a national initiative funded by the Arts Council of England, to establish 1000 artistic residencies during the year 2000-1.



Bluecoatconnect

Our two-year education outreach programme **Bluecoatconnect** culminates in January 2001 with a festival at the Bluecoat (details opposite) before re-launching in the spring with an exciting new programme of projects. Meanwhile the following activities are taking place:

Going 24-Hours

Two groups of young people from **The Project Post** in Walton have been exploring issues around the 24-hour city using video, song and music. Following two months of workshops and a 48 hour residential with artists **Cheryl Martin, John Aggrey** and **Tristan Brady-Jacobs**, the groups have produced a high quality soundscape video which will begin its tour of the region in November. The work will be shown on the Bluecoat's website in 2001.

Produced in association with Merseyside Youth Association.

Rice Lane City Farm

A realistic and straight-talking theatre performance that tackles bullying and its surrounding issues comes to the stage in November. Written and performed by a group of talented young people at Rice Lane City Farm, the work is the result of three months of workshops. Artists and performers include **Dinesh Allirajah, Jenny Cousins, Oscar Carrasco, Shaun Campbell, Amy May Caswell, Linda Doyle, Michelle Edwards, Sarah Edwards, Suzanne Edwards, Lorraine Gleave, Jessica Hughes, Alan Jones, Gemma Kettle, Michelle Kinsella, Liam Little, Karla Magee, Steve Mulrooney, Michelle Murghta, Leanne Murphy, Suzanne Murphy, Richard Parker** and **Laura Roberts**. Tour dates to be announced.

Regenerate

Workshops begin in October at **West Derby Comprehensive School** and **St John Almond Comprehensive School, Speke** when dance and video artists take the schools by storm. Pupils from years 8 and 9 will work together as an artistic team towards a live performance, creatively fusing the two artforms. Premieres at the **Bluecoatconnect Festival**.



Bluecoatconnect

Fairfield and Oakfield Day Centres

Members of **Fairfield and Oakfield Day Centres** are teaming up with artists from Liverpool based **Common Ground Sign Dance Theatre** this October to produce a new performance based installation for the **Bluecoatconnect** festival, when **Common Ground** will also be performing.

Produced in association with North West Disability Arts Forum

Bluecoatconnect Festival

20 January - 17 February 2001

Bluecoatconnect is celebrating the achievements of all the artists and groups who have taken part over the past two years. The Bluecoat will host a festival of new community-led performances, exhibitions and a conference as the first phase of our education outreach programme comes to an end. A brochure will be available in November giving festival details. To receive a copy telephone 0151 709 5297, or write to Sarah Haythornthwaite at the Bluecoat Office.

Many thanks...

Work produced by **Arts First**, a group of artists from **Fazakerley Croxteth Day Centre**, has been on tour since July 2000. The group and the Bluecoat would like to thank staff at **Mailout** (the national magazine for developing participation in the arts), **British Home Stores** and **Dane Interiors** in Liverpool for assisting them in exhibiting and touring their work. The final showing will be at the **Bluecoatconnect Festival**.



BARCLAYS
Littlewoods

Supported by the *Esmée Fairbairn Charitable Trust*

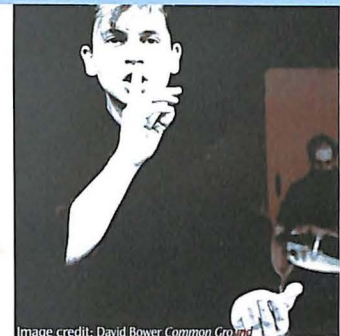


Image credit: David Bower Common Ground



Image credit: Robert Cook Fazakerley Croxteth Day Centre

Bluecoat Workshops

Space to Move

Monday 27 November – Friday 1 December 10.00am – 5.00pm
 Course Fees: £60.00 (£45.00 concession for people based in the North West)



In this five day professional development course for dancers, Space to Move celebrates its 7th anniversary with Lucia Walker leading an intensive week of improvisation, exploration and skill sharing. For further information and an application form contact MDI on 0151 708 8810. Deadline for applications Friday 27 October.

Adult Art Classes

Creative, enjoyable and affordable courses in **Life Drawing** and **Printmaking** take place over 10 weeks and you can choose from weekday mornings or evenings. All courses begin the week commencing Monday 2 October.



Printmaking

Learn step by step traditional and experimental printmaking techniques from a choice of beginners, intermediate and advanced classes.



Course fees: £45.00 (£30.00 conc)
 Location: Print Studio (Entrance Door A)

Life Drawing

Learn new skills and approaches to drawing from the life model. Suitable for all abilities.



Course fees: £37.50 (£26.00 conc)
 Location: Neptune Room (Entrance Main Door)

Print Studio Hire

Tuesday – Friday 10.00am – 5.00pm
 Saturday 11.00am – 5.00pm
 Hire costs: Please contact the Gallery Office for discount prices.

The print studio is available for hire to experienced printmakers. Please book one week in advance. It is our aim to make the studio as accessible as we can. Please contact the Gallery Office if you are interested in using the studio for small groups.

Bluecoat Vouchers

The perfect gift for any occasion, these can be exchanged as payment for the course fees in Life Drawing and Printmaking or Print Studio Hire. To purchase vouchers and receive further information, contact the Gallery Office.



TIMETABLE

Monday	Beginner's Printmaking	10.00am – 1.00pm
	Life Drawing	10.30am – 1.30pm
	Intermediate Printmaking	2.00 – 5.00pm
Tuesday	Beginner's Printmaking	6.00 – 9.00pm
Wednesday	Life Drawing	6.00 – 9.00pm
	Intermediate Printmaking	6.00 – 9.00pm
Thursday	Advanced Printmaking	6.00 – 9.00pm

GALLERY OFFICE
 0151 709 5689

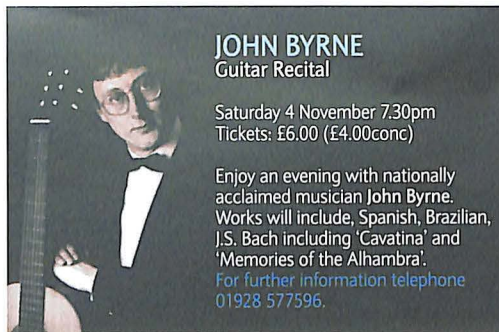
Bluecoat Plus

ADVERTISEMENTS

JOHN BYRNE Guitar Recital

Saturday 4 November 7.30pm
 Tickets: £6.00 (£4.00conc)

Enjoy an evening with nationally acclaimed musician John Byrne. Works will include, Spanish, Brazilian, J.S. Bach including 'Cavatina' and 'Memories of the Alhambra'.
 For further information telephone 01928 577596.



Mind Body Spirit Soul & Beauty Fair

Saturday October 28,
November 25, December 16, 18, 20, 22 and 23

Join Karmic Angels at their Mind Body Spirit Soul & Beauty Fair as they bring together like minded people looking for guidance in natural alternative and spiritual awareness therapies. By creating harmony, warmth, love and happiness they aim to produce karma for all. Products and advice available all day.

For further information and advice contact Stephanie Hambley on 0151 283 2437.

OUTSIDE HIRES

FAIRS

Book Fairs

in the Sandon Room,
Fridays and Saturdays
 October 6 & 7, 13 & 14
 November 3 & 4, 10 & 11
 December 1 & 2, 8 & 9

Craft Fair

in the Concert Hall
 December 18 - 23

Mind, Body, Spirit

in the Sandon Room, Saturdays
 October 28
 November 25
 December 16, 18, 20, 22 and 23

TARA ARTS

Revelations

Friday 6 - Saturday 7 October 8.00pm Matinee: Friday 1.30pm
 Tickets: Evening £7.00 (£5.00 conc) Matinee £5.00 (£3.00 conc)

The Revelation is...England 2001. Six young people tread the superhighway of new theatre in this performance by Asian Theatre Company, Tara Arts. Real stories of three generations pepper the drama, dance, martial arts and live DJ-mix. Revelations bares the roots of contemporary Asian youth culture, revealing a generation that mixes the colours, sounds, stories, heat and language of its past to invent a new England.



Bluecoat Plus

ADVERTISEMENTS

Bluecoat Café Bar (Front Courtyard)

Open Monday – Saturday 10.00am – 5.00pm.

T: 0151 709 2179

Enjoy a drink or a meal away from the city centre crowds at the Bluecoat Café. Situated on the ground floor, the café has an indoor eating area or on a good day you could sit out in the adjoining courtyard. With a wide selection of hot and cold dishes, cakes, coffees, teas, wines and beers, it is the ideal place to eat!
Available for private hire.



Editions Limited (Door C)

Open Monday – Saturday

9.30am - 5.30pm T: 0151 709 2001

View our extensive range of contemporary etchings, wood engravings, collographs, lino and wood cuts - all for sale. We also offer an in-house picture framing service at affordable prices, and a wide selection of cards, wrap, posters and gifts for every occasion.

All major credit cards accepted. www.editions.com



Bluecoat Bookshop (Door D)

Open Monday – Saturday 9.30am – 5.30pm

T: 0151 709 5449

Don't forget to stop at the Bluecoat Bookshop, the best bookstore in town, with its wide selection of topics at absolutely unbeatable prices. New stock weekly, including fiction, travel, art, cookery, computers, gardening, local history and children's books. There is a book for everyone! Credit cards accepted (Access & Visa).

The Liverpool Connection (Door B)

Open Monday – Saturday 10.30am – 5.30pm

T: 0151 708 6123

Take a trip down memory lane and discover Liverpool's past and your heritage. Call in at The Liverpool Connection for all your local history requirements. We offer a wide range of books, maps, cards, prints and paintings all about Liverpool.

Bluecoat Display Centre (Garden Courtyard)

Open Monday – Saturday 10.00am – 5.30pm.

Free Admission to exhibitions.

For further information T: 0151 709 4014

e mail: crafts@bluecoat.u-net.com

website: www.Bluecoatcrafts.merseyworld.com



bluecoat.displaycentre



ANCIENT AND MODERN 19 September – 14 October

Work from 3 cities with very different cultures.

Ceramics by Liverpool's Julia Carter Preston, whose work successfully blends historic and contemporary imagery to make quite unique, exquisitely detailed one-off pieces.

As part of the Eight Days A Week programme three jewellers from Cologne, Theda Katharina Besser, Gabriela Felgentrager and Mechthild Watermann exhibit work in a variety of styles and media, both precious and non-precious. In contrast is the intricate, traditionally inspired jewellery of silversmith Spiros Koukos from Athens, whose work is made from sterling silver and a remarkable variety of stones

NATURAL ELEMENTS 24 October – 18 November

Sculptural wood by three of Britain's leading practitioners Mike Scott, Malcolm Martin and Gaynor Dowling, showing alongside beautiful woven hangings in natural colour tones.

REVIEWING THE CATEGORIES: THE CRAFTS IN BRITAIN NOW

15 November 3.15pm Tickets: £3.95 (£2.95 conc)

Lecture by writer, critic and design historian Tanya Harrod.

ROCKS 28 November – 6 January

An exhibition by contemporary jewellers whose work is in unconventional personal collections of media and rock stars. Visitors will have an early opportunity to purchase from these makers' new collections. Jewellery by Andrew Logan, Kate Wilkinson and Sophie Harley promises a truly spectacular show. A complementary display of mirrors adds finishing touches to a popular Christmas exhibition.

Bluecoat Art Shop (Door G)

Open Monday – Saturday 9.30am – 5.30pm

T: 0151 709 5449

A wide range of top quality art materials for the professional or amateur, at discount prices.

Diary

Date October

1 - 31/10/00

4/10/00

6/10 - 11/11/00

6 - 7/10/00

12/10/00

13 - 14/10/00

14/10/00

18/10/00

19/10/00

20/10/00

21/10/00

26/10/00

28/10/00

November

1 - 30/11/00

3 - 4/11/00

4/11/00

8/11/00

10/11/00

10 - 11/11/00

11/11/00

16/11/00

17/11/00

18/11/00

21/11/00-11/1/01

25/11/00

27/11 - 1/12/00

December

1 - 31/12/00

1 - 2/12/00

6 - 7/12/00

8 - 9/12/00

15/12/00

18/12/00

18 - 23/12/00

Event/Exhibition

Claire Hope
Bluecoat Reading Group
Artists from Cologne
Book Fair
Revelations
Joachim Zoepf
Book Fair
Maggie Nicholls and
Frakture Big Band

Jacqui McShee's Pentangle
Arc
Shunts and Lifts -
The No. 2 Re-mixes
Hession/Mole/Kirk
Jean 'Binta' Breeze with
Jerome Massett
Mind Body Spirit Fair
Words and Music Project

Tony Knox
Book Fair
Guitar Recital
The Experience
On The Couch and Portrait
with Group and Duck

Book Fair
Aianna and the Tree
Stefan Keune and
John Russell

The Electro Acoustic End
June Tabur
Look Out!
Mind Body Spirit Fair
Space to Move

Marie Anne McQuay
Book Fair
Sense of Sound
Book Fair
The Soundwalks Re-union
Mind Body Spirit Fair
Craft Fair

Type

Installation
Literature Course
Exhibition
Fair
Performance
Music
Fair
Music

Music
Music
Music

Music
Poetry

Fair
Course

Installation
Fair
Music
Performance
Performance

Fair
Performance
Music

Music
Music
Exhibition
Fair
Dance Course

Installation
Fair
Music
Fair
Music
Fair
Fair

Time

All day
6.30pm
10.30am - 5.00pm
10.00am - 5.00pm
8.00pm
8.00pm
10.00am - 5.00pm
8.00pm

8.00pm
8.00pm
8.00pm

8.00pm
8.00pm

10.00am - 5.00pm
10.00am - 6.00pm

All day
10.00am - 5.00pm
7.30pm
1.30pm
8.00pm

10.00am - 5.00pm
3.00pm
8.00pm

7.30pm
8.00pm
10.30am - 5.00pm
10.00am - 5.00pm
10.00am - 5.00pm

All day
10.00am - 5.00pm
8.00pm
10.00am - 5.00pm
6.30pm
10.00am - 5.00pm
10.00am - 5.00pm

Price

FREE
£12.00 (£9.00 conc)
FREE
FREE
£7.00 (£5.00 conc)
£3.00 (£2.00 conc)
FREE
£5.00 (£3.00 conc)

£9.00 (£7.00 conc)
£5.00 (£3.00 conc)
FREE

£5.00 (£3.00 conc)
£5.00 (£3.00 conc)

FREE
tbc

FREE
FREE
£6.00 (£4.00 conc)
Payment by Donation
£6.00 (£4.50 conc)

FREE
£5.00 (£3.00 conc)
£5.00 (£3.00 conc)

FREE
£9.00 (£7.00 conc)
FREE
FREE
£60.00 (£45.00 conc)

FREE
FREE
£7.00 (£5.00 conc)
FREE
FREE
FREE
tbc

Room

Window Box
Annexe
Gallery
Sandon Room
Concert Hall
Sandon Room
Sandon Room
Concert Hall

Concert Hall
Concert Hall
Sandon Room

Concert Hall
Concert Hall

Sandon Room
Annexe

Window Box
Sandon Room
Concert Hall
The Blackie
Concert Hall

Sandon Room
Concert Hall
Sandon Room

Neptune Room
Concert Hall
Gallery
Sandon Room
Concert Hall

Window Box
Sandon Room
Concert Hall
Sandon Room
Neptune Room
Sandon Room
Concert Hall